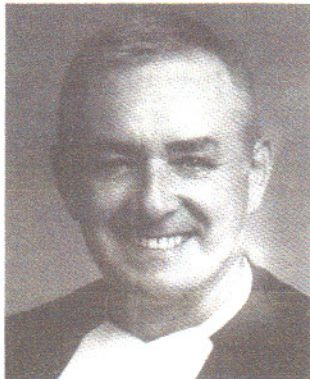


CBS EXPANDS FAMILY WHILE TRADITION CONTINUES

Dear CB Alumni/ae,

By now I'm sure you're aware of Christian Brothers' plan to become co-educational in the fall of 1990. All of us here at CB are busily engaged in making the transition to co-education a highly successful



Brother Richard Camara, F.S.C.

one. The level of anticipation among students, parents, and staff seems quite high.

At the same time, there are a great many preparations to be made and the everyday needs of the school to be attended to, so our workload these days is challenging, to say the least.

In the months ahead we will be keeping you posted about co-educational developments and our future planning. In this issue of *The Connection*, I'd like to acquaint you with the general process and various considerations that prompted the school's decision to become co-educational.

As I'm sure you can appreciate, the decision to alter Christian Brothers' 114-year tradition of male-only education wasn't arrived at easily. Quite the contrary, the process was long and exhaustive, involving two major task forces (the first in 1982), various demographic studies, community and school surveys, financial analysis and projections, collaborative planning with the Diocese and other Catholic high schools, and countless meetings by CBS administrators, regents, faculty, and other groups. Ultimately, our proposal for co-education—

made in conjunction with a larger proposal for eventual relocation and construction of a modern, expanded facility—was based on the strong recommendation of the CBS administration and the Board of Regents. Major factors underlying the recommendation were the following:

- A comprehensive assessment by the Christian Brothers West Coast Province of its various entities, resources, and needs, and the implications of that assessment for the future allocation of Brother personnel to schools.

- The mandate of the Christian Brothers Province to all of its nine secondary schools to establish long-range plans assuring each school's viability into the 21st century.

- The nature of the Brothers' mission, which is to extend the opportunity of La Sallian education to as many students as possible.

- The very positive experiences the Christian Brothers Province has had in operating co-educational schools. (Four of the Brothers' west-coast schools currently are co-educational, and two others are about to become so.)

- Critical financial issues, including escalating operational costs, student enrollment projections, tuition rate limitations, financial aid requests, declining subsidies, staff salary needs, and vital capital expenditures.

- The major growth trends in Sacramento, and the Brothers' desire to assist the Diocese in responding to the emerging educational needs of parishes and families.

- The results of comprehensive studies by the Diocese indicating a strong desire in the community for the option of a Catholic co-educational high school.

- The preference for a co-educational CBS expressed (through professional surveys) by a clear majority of the school's current male population (80%), CBS parents (70%), and Catholic

elementary school parents (76%).

- The opportunity to expand and diversify the school's college preparatory curriculum, particularly in the areas of fine arts and business education, and the positive impact of female participation on the quality of certain courses (e.g., discussion of issues in religion classes).

- The significant advantages of a co-educational student body in the operation of effective co-curricular programs: student government, clubs and activities, athletics, and religious functions such as liturgies and retreats.

- The concerns of CBS faculty that single-sex education is not always conducive to students' best personal and social development.

- The fact that if CBS were to become co-educational, single-sex secondary education options would still exist for the Catholic families of the community.

Weighing all these factors, it became clear to the administration and the Board of Regents that a co-ed CBS was "an idea whose time had come"—a change that would serve the best interests of the Brothers themselves, the Diocese, and, most important, the Catholic students and families of Sacramento.

As graduates, I'm sure that some of you have mixed feelings or reservations about CB's change to co-education. I know from last year's survey that a majority of CB graduates favor the decision and are looking forward to sending both their sons and daughters here. At the same time, there are concerns on the part of some that CBS may come to lose those special qualities that have endeared it to students for so many years. All I can offer you in this regard is my own strong conviction that, while certain aspects of the CBS experience will doubtlessly change due to co-education, the essential qualities will re-

CONTINUED ON PAGE 3

CO-EDUCATION

SOME COMMON QUESTIONS ABOUT CO-EDUCATION

With the decision to make Christian Brothers High School co-educational in the fall of 1990, many questions have been asked of the CBS administration. Here are some responses to frequently asked questions.

How will the school be identified?

The school will continue to be called Christian Brothers High School. This name reflects the religious order that owns and operates the school (not the gender of the students), is a familiar reference throughout the Sacramento community, and is a source of pride not only for the current students but for thousands of alumni as well. Christian Brothers also will continue to have the Falcon for its mascot and will maintain its traditional school colors of red and blue.

Will Christian Brothers be accepting new students at all grade levels?

Yes, the school will be accepting qualified students at all four grade levels. While the school's admissions policies assign priority to Catholic students and schools, CBS also welcomes the applications of non-Catholics and of students from public schools.

What will be the overall student-teacher ratio for 1990-91?

CBS has always sought to provide conditions that allow for effective classroom instruction and individual attention to students. Next year the school will continue its practice of maintaining a low student-teacher ratio. (The current ratio is 23-1.)

What will tuition be next year, and will it be the same for all students?

Tuition for CBS next year will be maintained at its current rate of \$3,200. This rate will apply to all students, male and female. Christian Brothers makes a concerted effort every year to provide financial assistance to as many needy families as possible. Funds are awarded on an equal-opportunity basis to those with demonstrated financial hardship. It is the school's goal to make a Christian Brothers education possible for every qualified student who wishes to attend.

Will all classes be open to both girls and boys?

With the exception of physical education, all classes will be open to both sexes. PE classes will be single sex but will combine at times for certain sports or activities.

What type of athletic program will be provided for girls?

The school's intent is to offer girls the same high-caliber sports program that it has traditionally provided boys (and for which it is so well known throughout the area). CBS expects to field girls' teams in eight sports next year: softball, soccer, cross country, volleyball, basketball, swimming, tennis, and track. Christian Brothers' approach to girls' sports will be the same as its approach to boys'—to encourage participation (except where it interferes with academics), to provide adequate support (including fully qualified coaches), to promote healthy activity and enjoyment, and to teach values and foster growth.

Will girls have opportunities to become fully involved in next year's student government, clubs, and activities?

CBS is already making plans that will enable its new female students to participate fully in student government and clubs and to help shape next year's activities program. A student committee, composed of both girls and boys, will be making recommendations regarding student body and class election procedures, activities coordination, possible summer programs, and so forth.

Will CBS sponsor a drill team next year? Also, will cheerleaders be chosen from among its own students?

Yes. CBS's drill team will be modeled along the lines of Bishop Manogue High School's very successful program. The team will be open to all CBS girls who wish to try out. Only CBS students will have the opportunity to try out for cheerleaders.

What type of dress will students be expected to wear next year?

CBS will require a dress code of all students that reflects the school's philosophy towards student attire—specifically, that such attire should:

CONTINUED ON PAGE 4

E G B O K

Professional Couriers

Mark P. Gebhardt
President

Call (916) 448-4524



- 24 HOUR SERVICE
- BICYCLE & Motor Couriers
- LOWER Rates

1311 G Street, Suite 4 • Sacramento, CA 95814

PRINCIPAL'S MESSAGE

CONTINUED FROM PAGE 2

main. Academic excellence, personal growth and development, attention to individual needs, student-teacher friendship, the *esprit de corps* of the student body—qualities such as these are fundamental to the Christian Brothers experience, and I can assure you that they always will be. CBS is about to expand its family, but the tradition goes on.

QUESTIONS ON CBS' MOVE TO CO-EDUCATION

CONTINUED FROM PAGE 3

be in good taste
 reflect self-respect
 and pride in the school
 not detract from the
 essential purpose of the school,
 which is learning
 discourage exces-
 sive vanity, competitiveness,
 elitism, or faddism
 not offend modesty
 encourage sound
 grooming habits
 not impose financial
 burdens on families

Details of next year's dress code are still being reviewed by the CBS administration, with input from students (both boys and girls), parents, and staff. The following general features have already been determined:

CBS will require comparable dress codes for girls and boys, consisting of guidelines, options, and restrictions related to everyday school attire and to "Dress-up Day" attire. The dress code will be equitable, providing a reasonable degree of flexibility and choice but at the same time adhering to the principles of dress and appearance cited earlier.

Students, both girls and boys, will have the option of wearing a CBS uniform. *Note:* In designing the girls' uniform, CBS will attempt to incorporate various items of apparel currently worn by students attending Sacramento's other Catholic high schools (so as to reduce the expense of entirely new uniforms for transfer students).

The dress code at CBS will be reviewed on an ongoing basis.

Will CBS relocate within the next four years?

No. Incoming freshmen can be assured that CBS will remain at its present site during their four years of stay at the school.



The Sacramento media focused a great deal of attention at Christian Brothers' Open House in January, including interviews with prospective students.

What changes will occur to the school plant and facilities?

CBS is consulting with architects in planning appropriate changes to the plant and facilities. These include an increase in the number of classrooms, additional storage units and restrooms, renovation of the shower/locker rooms, reconfiguration of the athletic fields, construction of a softball facility, expanded faculty work areas and coaches' offices, and provisions for parking and traffic control. The estimated cost of renovations is \$400,000 (of which the Diocese will pay 75%), with all work to be completed before school opens in the fall.

In general, how is the transition to co-education being handled?

Several months ago the CBS administration, working with consultants, designed a co-education transition process featuring the following:

A special co-education steering committee to oversee the transition process and make final recommendations to the administration.

Seven faculty and staff committees, each focused on a particular element of the transition: culture; strategic planning, marketing, and evalu-

ation; curriculum; staffing; students; plant and facilities; finances.

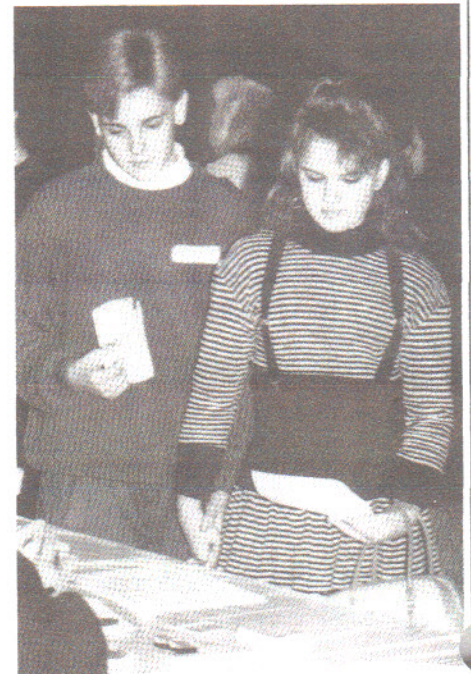
Three advisory committees involving representative groups of students, parents, and Regents/alumni.

Information programs aimed at students and the public.

Admissions policies, procedures, and timelines for incoming freshmen and transfer students.

Ongoing consultation with the Diocesan Office of Education, other Catholic high schools, and Catholic elementary schools.

Because it actively involves all elements of the school community, this process is proving an effective means of planning and decision-making for the CBS administration.



Future co-eds scan some literature made available to them at the CBS Open House.